

Historic, Archive Document

Do not assume content reflects current scientific knowledge, policies, or practices.

TUTTLE BROS. NURSERIES

Station C, Box 126
Pasadena 6, California

RETURN POSTAGE GUARANTEED

Sec. 562 P. L. & R.

U. S. Postage

PAID

Pasadena, Calif.

Permit No. 686

LIBRARIAN
U. S. DEPT. AGRICULTURE
Washington 25
D. c.

SHRUBS for SUMMER BLOOM

What shrubs can we plant for summer bloom? How many thousands of times we have been asked this question we wouldn't want to say. However, with the wealth of material we display in our nurseries it's a problem easily solved. To familiarize you with a few of the outstanding varieties we are sending you this folder. We do not have space to describe all varieties or go into details. We'll be glad to tell you all about them when you come in.

NOTE HEIGHT TO WHICH SHRUBS GROW, AFTER DESCRIPTIONS



ABELIA zanderi Goucher

Winged Abelia. Growing as it does to only 3 or 4 feet this charming shrub is just the right size for planting under a window or in any sunny place where a low, dense shrub is indicated. Polished foliage, tinted bronze, and countless pink bells through the whole summer.

5-gal., \$2.75

1-gal., 85c

BOUVARDIA humboldti Albatross

Matchless for the permeating fragrance of the pure white tubular flowers, often used in corsages or in the hair. The slender leaved shrub grows only 2 to 3 feet in height and likes the sun. It should fit into some spot near a window that is often open. 1-gal., \$1.25

BRUNFELSIA calycina floribunda

Yesterday and Today. Refreshing as a summer shower. Heavy dark green foliage, the newer growth brushed with purple, and big flat bloom, rich violet in color, that changes with the passing days to lavender and finally white. Rich perfume. Thrives in either sun or part shade. 4 to 5 ft.

5-gal., \$3.50

1-gal., \$1.25



SEE INSIDE FOR OTHER SUMMER BLOOMING SHRUBS

SHRUBS for SUMMER BLOOM

CARPENTERIA californica

Tree Anemone. Three-inch, single, frosty-white bloom with the delicate texture of crepe paper are borne in clusters of from 5 to 7 at the tips of the well foliated branches. Intriguing fragrance. Enjoys filtered sun. 4 to 5 ft. 1-gal., \$1.25

CERATOSTIGMA willmottianum

Deep Blue Plumbago. Above a thicket of maroon stems and glistening foliage this introduction from China perfects its clusters of single brilliant blue bloom from May until winter. Enjoys sun. 3 ft. 1-gal., 90c

CROTALARIA agatiflora

Canary Bird Tree. In summer you may, with this tall shrub, enjoy a unique display of chartreuse colored bloom that resemble canary birds in both color and form. Grows rapidly to 8 or more feet in height. Sun. 1-gal., \$1.15

5-gal., \$3.50

DABOECIA cantabrica Alba

Fairy Lanterns. Cute as a bug's ear. In either full sun or partial shade this miniature shrub—it grows only to a foot in height—presents a neat appearance clothed in its glistening foliage. From March until winter dainty nodding white bells are borne on slender stems. Enjoys peat. 1-gal., \$1.00

DWARF CITRUS SHRUBS

For any sunny spot either in pots or in the ground, these clean foliated shrubs are tops. Polished foliage, white, fragrant, characteristic citrus bloom and showy orange colored fruits that are useful as well as highly ornamental. May be trained in espalier form against a wall. 4 to 6 ft. 1-gal., \$1.25

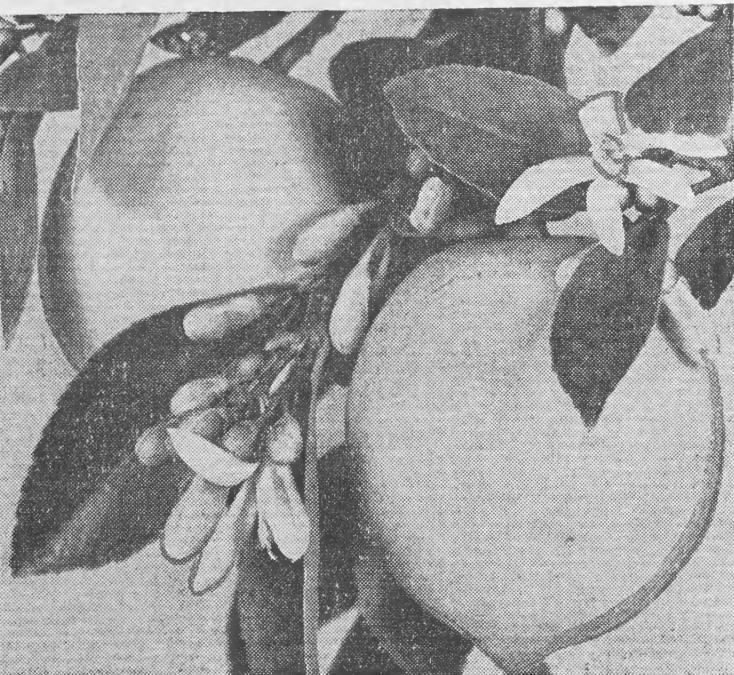
5-gal., \$3.25

CALAMONDIN ORANGE

MEYER LEMON

RANGPUR LIME

Meyer Lemon



ESCALLONIA organensis

For that sunny spot you wish to cover quickly we suggest this variety. Grows to 6 or 8 feet presenting a contrast of maroon tinted stems, dark handsome foliage that is brushed with red in the newer growth and intriguing clusters of appleblossom pink bloom through summer and fall. 1-gal., 90c

5-gal., \$2.75

FREMONTIA mexicana

You'll like everything about this robust, fast growing shrub, its furry, brown-tinted, maple-shaped leaves, its sturdy upright habit and most of all its big yellow cup-shaped bloom that persists in summer. Sun. 8 ft. 1-gal., \$1.25

5-gal., \$3.50

FUCHSIAS

In the shaded parts of your garden few shrubs will provide such a long and lovely summer display of white, red, pink, purple and lavender. Used in hanging baskets you'll find the trailing sorts dripping their colorful bloom from every thin pendulous branch. A full assortment of the better varieties. 4-inch pots, 65c

GARDENIA

Mystery variety. In any spot that has benefit of a half day or more sun this, the loveliest of all Gardenias, should supply a bounty of big, perfect, satiny white bloom. Delightful fragrance. 1-gal., \$1.00

5-gal., \$3.00

HIBISCUS

One of the most dependable sources of warm weather bloom is Hibiscus. Their big showy flowers either single or double are borne in profusion from June until winter. Prices, unless otherwise noted: 1-gal., 90c

5-gal., \$3.00

AGNES GAULT. Enormous single pink.

CROWN OF BOHEMIA. Dwarf double gold and bronze. 5-gal. \$4.50; 1-gal., \$1.75.

BRILLIANTE. Single flaming scarlet.

KONA. Double deep pink.

CALIFORNIA GOLD. Single yellow. 5-gal. only, \$4.50

OAHU. Huge red centered bronzy orange single. 5-gal. only, \$4.50.

WHITE WINGS. Single white, red center. 1-gal., \$1.00

HYDRANGEAS

On the east or north sides of buildings, or in shaded spots under trees, Hydrangeas flourish and produce in June and July enormous heads of thrilling bloom in a wide range of colors and shades. 1-gal., 90c

AMI PASQUAAR. Red.

MME. E. MOUILLERE. White.

EUROPA. Salmon pink.

MRS. BAARDSE. Salmon-red.

KUNERT. Blue.

NIEDERSACHSEN. Pink.

5-gal. only, \$3.00.

TROPHEE. Deep rose.

HYPERICUM patulum henryi

For big single golden yellow bloom through many months we recommend this graceful bronze-tipped shrub to you. 2 to 3 ft. Sun or shade. 1-gal., 75c

5-gal., \$2.75

LANTANA

There is not a day from June until November that these plants are not a riot of brilliant color. They appreciate plenty of sun. 2 to 4 ft. 1-gal., 65c

PINK

WHITE

YELLOW

Also the TRAILING LAVENDER variety for bank or parking strip.

OLEANDERS

Rival the Hibiscus for color. The large cool appearing plants are thickly crowded by big clusters of showy bloom all through the warm months. All varieties, unless otherwise noted, 1-gal., 75c

Some varieties, 5-gal., \$2.75

BETTIE. Single light pink.

1-gal., 85c

DOUBLE ROSE.

MRS. ROEDING. Double salmon.

CHERRY RED. Single.

SINGLE WHITE.

DAWN. Pale pink.

SINGLE YELLOW.



Princess Flower

POLYGALA dalmaisiana

Both winter and summer this attractive, bushy plant is a perfect bouquet of big, purple, pea-shaped bloom. 4 ft. Sun. 1-gal., 85c

5-gal., \$3.00

ROMNEYA coulteri

Matilija Poppy. Here is one plant that after becoming established requires practically no attention. Forms a tall stalky clump of gray-green foliage and huge, single, crepe paper-like bloom to six inches across. 1-gal., \$1.50

TIBOUCHINA semidecandra grandiflora

Princess Flower. Provides a dazzling display of huge red buds and single, royal purple bloom from July or August until winter. Big velvety leaves handsomely edged with bronzy red. 4 to 5 ft. Sun or part shade. 1-gal., 85c

5-gal., \$2.75

WESTRINGIA rosmariniformis

Forms a thicket of thin stems thickly strung with tiny glistening leaves, polished green above and silvery beneath. Many small, five petaled, white bloom in summer. Always neat and attractive. Hardy. Sun. 1-gal., \$1.00

5-gal., \$3.25

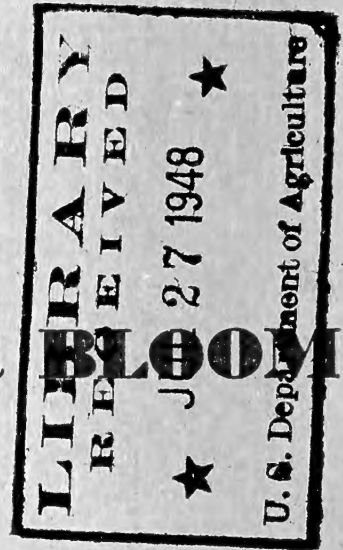
THESE VARIETIES AND MANY MORE DESCRIBED IN DETAIL IN OUR BIG GENERAL CATALOGUE

62,09



1948

SHRUBS
 for
SUMMER



A FOLDER OF TIMELY SUGGESTIONS

Tuttle Bros. Nurseries

729 Atlanta Street
 Altadena

Phone:
 Sy. 7-1177